

feel the comfort of
intelligent
building



One Point Solutions



Sophisticated Building with latest amenities
for a Safe, Healthy & Modern environment



Company Profile



Gem Group of Companies (Gem Infotech, Gem Electronic, Gem Consultantss), an ISO 9001 - 2015 quality certified company is a professional provider of one stop solution for all your building needs. Turnkey ELV & BAS solutions designed to improve building efficiency and performance. Offering best quality products & services is our motto and we have never compromised on quality.

It is a pleasure to live in a building which can be as intelligent as human. Gem Group of Companies provides you such a comfortable atmosphere wherein the building can act according to your preferences.

Technical Solutions, Refrigeration Services, Construction Technologies. Our breadth of solutions and experience, together with our commitment to corporate responsibility, make GEM a reliable partner in designing and implementing today's systems and preparing to tomorrow's challenges. Leveraging its expertise in turnkey solutions, the Group positions itself for strong growth in the services sectors by developing professional solutions for the market and adopting a new set of values based on customer-focus, multicultural team spirit, knowledge sharing and transparency.

Providing valuable service with high quality products have always been our business objectives. The service provided by our experienced and hardworking professionals have won widespread admiration from the clients due to the credibility offered.

We have grown phenomenally serving various sectors such as,

- | | | |
|----------------------------------|--|--|
| ◆ Airports Ports and Railways | ◆ Temples | ◆ Club & Bar |
| ◆ Conference Centers | ◆ Hospitals | ◆ Automobile Sector (Bus, Cab & Logistics) |
| ◆ Educational Institutions | ◆ Marriage / Recreation Halls | ◆ Banks / Financial Institutions |
| ◆ Corporate Offices / IT Sectors | ◆ Hotels & Resorts | ◆ Public Area (Bus Stand, Railway Station & etc.,) |
| ◆ Industries | ◆ Residencies (Bungalows / Individual Houses & Apartments) | ◆ Jewellery Shops |
| ◆ Petrol Bunks | ◆ Theaters | ◆ Textile Showrooms |
| ◆ Commercial Complex (MALL) | | ◆ Super Markets |

All the above verticals mentioned with our primary target to improve building safety, security, comfort, Productivity, efficiency and the rapidness of delivery with our top most priority. With our elite team of project managers, design engineers and multi-disciplinary groups, enables us to offer our customer's unsurpassed turnkey solutions, tailored to our customer's needs and satisfaction.



GEM areas of operations

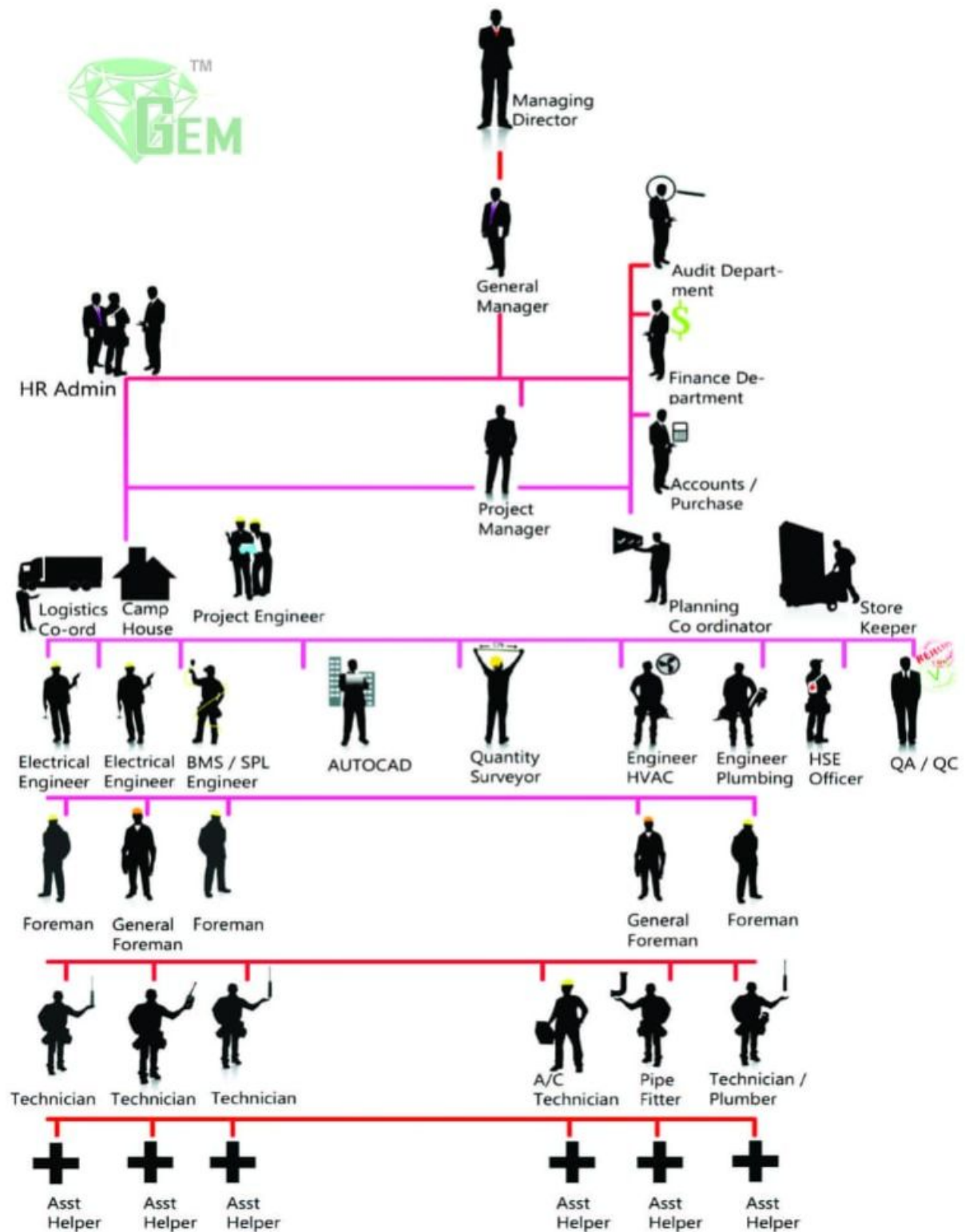
- | | |
|--|--|
| ◆ Security Automation System – Access Control, CCTV, Intrusion, Perimeter, etc | ◆ Plumbing works |
| ◆ Safety System – Fire Alarm System, Emergency evacuation, etc | ◆ Home Automations |
| ◆ Building Management System (BMS) | ◆ Hotel & Hospital Automations |
| ◆ Industrial Automations – PLC / SCADA | ◆ Renewable Energy Solutions – AESP |
| ◆ MEP – HVAC, Ventilations, Fire Hydrant | ◆ Design & Engineering Solutions for Automations & MEP |
| Fire Fighting, Sprinkler etc | ◆ Networking – DATA / Voice & Server Setup |
| ◆ Electrical works – HT, LT, Lighting, DG, UPS, Wiring, etc | ◆ Interior Decoration – Corporate Office, IT Sectors & Residential |
| | ◆ Facility Management Systems |

GEM Strenth

- | | |
|---|---|
| ◆ Authorities highly qualified, experienced technical staff from multinational companies such as Siemens, Honeywell, York, Johnson Control Etc. | ◆ Highly qualified, experienced technical staff. |
| ◆ Highly Qualified Engineers. | ◆ Prompt & precise response to client's requirements. |
| ◆ Ready to Mobilize immediately. | ◆ Commitment to quality work and meeting deadlines. |
| | ◆ Strong Financial Support. |
| | ◆ Qualified Electricians & Technicians employed on roles. |

ORGANIZATION STRUCTURE

GEM is professional in its functioning with its proper work structure. The General Manager leads the organization and reports to the board of directors who are well experienced and provide strategic direction for the working of the company. For Organization Chart.



BUILDING MANAGEMENT SYSTEMS (BMS)



IBMS Software



Building Automation Controller



Electrical Fencing



Home Automation Systems



CCTV Surveillance



Biometric System



Intrusion Systems



Automated Parking



GPRS Tracking



Cell Phone Jammer



RFID Security Guard



Metal Detector



Video Door Phone



Electronic Safety Locker



Sensors



Walking Scanner



Ceiling Speaker



Public Address Systems



Automatic Systems



Video Conference Setup



Conference Hall



Home Automation System

PASSENGER & GOODS ELEVATOR (COMMERCIAL & RESIDENCY)



PASSENGER ELEVATOR



GOODS ELEVATOR

& More...

MECHANICAL ELECTRICAL PLUMBING (MEP)

Fire Fighting and Plumbing



Fire Alarm



Fire Sprinkler



Smoke Detector



Fire Hydrant



Fire Extinguisher



Plumbing

ELECTRICAL SETUP - Commercial, Industrial & Appartment



LT



HT

HVAC - Commercial, Industrial & Bungalow



ALL TYPE OF SOLAR PRODUCTS - Industrial, Commercial & Domestic



ALL TYPE OF LED LIGHTS - Industrial, Commercial & Domestic



SMART LED LIGHTS



UPS



BATTERY



Commercial, Industrial & Corporate Office

& More...

NETWORKING - Data / Voice & Server Setup



Data Cabling



Voice Cabling



Optical Fibre Cabling



I/O Box Connection



LAN (Local Area Network)



WAN (Wide Area Network)



EPABX



IP PBX



Digital Key Phone



Intercom



Server Setup



Rock

& More...

INTERIOR DECORATION - Corporate Office, IT Sectors & Residential



GEM FACILITY MANAGEMENT SYSTEMS (FMS)



& More...

INDIA

- Taj Groups
- Hyatt Regency
- Accord Hotels
- GRT Hotels
- Crown Plaza Hotels
- Inter Cardinal Hotels
- Novotel & IBIS Hotels
- Palmgrove Hotels
- Adayar Anadha Bhavan
- Residency Tower
- Krishna Hospitals
- AVMC
- Panimalar Medical College
- Aravind Eye Hospital
- Malar Hospital Fortis Hospitals
- Balaji Dental Medical College

Our Esteemed Client

- Express Avenue Mall
- Phenix Mall
- V.R. Mall
- AVIT College
- Anitha Matric. School
- Anandha Matric. School
- Arun School
- Nadar Hr.Sec. School
- Indian Bank
- ICICI Bank
- HDFC Bank
- Andhra Bank
- State Bank of India
- Axis Bank
- State Bank of Travncore
- L&T
- Reliance Jio
- Tafe Ltd
- NEC
- TCS
- TVS

- Godrej
- Ford
- Wipro
- Saint Gobain Glass
- Sodexo
- Ramco Groups
- Tamilnadu Cement Factory
- TATA Motors Ltd
- Apollo Tyre Ltd
- Bharathi Benz
- JPM Auto Limited
- Anjan Drug & Chemical Factory
- Honda Nattiono Ltd
- MGF Hyndai Ltd
- Chettinad Health City
- HPCL
- Mangalam Cement Ltd
- Moxata Industries Pvt Ltd
- Srinivasa Perumal Temple
- Sundaram Foundation

ABROAD

- Nazmi Groups of Company In Brunei & Dubai
- Bellwether Technology Corporation in USA
- Cathay Building 2002 Pte Ltd in Singapore

- Imperial Chemical Industries In London
- Emirates in Dubai

& More...

Authorised Supply & Services



Group of companies



9/D2, Vishwak Garden, Sri Sai Nagar, 2nd Main Road,
Chennai - 6000045.



Chennai Branch : Tambaram, Madhuravayal, Kodambakkam, Ambatore, ECR, Ennur
Tamilnadu : Coimbatore, Madurai, Trichy, Tirunelveli, Nagercoil, Theni, Virudhunagar, Sivakasi, Rajapalayam.
Other City : Nellore, Vijayawada, Hyderabad, Bangalore, Calicut, Cochin, Mumbai, Delhi.
Abroad : U.A.E., Singapore, Malaysia, Srilanka, Brunei.



044 - 29589838



+91 97909 50020 / +91 80727 78332



info@geminfotech.co.in, geminfotech07@gmail.com,
geminfotech8@gmail.com gemelectronic221@gmail.com



www.geminfotech.co.in